

City of Tustin

Introduction to Districting

Sept. 22, 2021

Dr. Justin Levitt, Vice-President
National Demographics Corporation

Traducción al Español Disponible

Meeting is Being Recorded

Logistics and Amenities

Introductions

Today's Goals

You Learn From the Experts

Experts Listen to *You*

You Leave Empowered to Give Effective Feedback

Why You Should Care

- ❑ Democracy works better when people are engaged.
- ❑ You are experts on the community.
- ❑ You are an expert about your neighborhood.
- ❑ A once in a decade opportunity.

Today's Schedule

AGENDA: 7:00 p.m – 9:00 p.m

Process, Rules and Goals

Neighborhoods/Communities of Interest

Public Mapping and Map Review Tools

Next Steps

Background

- California Voting Rights Act (CVRA) of 2002
- June 23, 2020 letter from the Mexican American Legal Defence and Education Fund (MALDEF)
 - ▣ The letter asserted that Tustin’s “at-large” election system violates the CVRA. The City of Tustin has started exploring the shift to district-based elections in light of the letter.

**We need your help to potentially make this change
and draw new City Council districts!**

Election Systems

1. “At Large”
2. “From District” or “Residence” Districts
3. “By District”

**The California Voting Rights Act
was written to specifically
encourage by-district elections.**

California Voting Rights Act (CVRA)

- ❑ Under the Federal Voting Rights Act (passed in 1965), a jurisdiction must fail 4 factual tests before it is in violation of the law.
- ❑ The California VRA makes it significantly easier for plaintiffs to force jurisdictions into “by-district” election systems by eliminating two of the US Supreme Court Gingles tests:
 - ~~❑ Can the protected class constitute the majority of a district?~~
 - ❑ Does the protected class vote as a bloc?
 - ❑ Do the voters who are not in the protected class vote in a bloc to defeat the preferred candidates of the protected class?
 - ~~❑ Do the “totality of circumstances” indicate race is a factor in elections?~~
- ❑ Liability is now determined only by the presence of racially polarized voting

CVRA Impact

❑ Switched (or in the process of switching) as a result of CVRA:

- ❑ At least 240 school districts
- ❑ 34 Community College Districts
- ❑ 154 cities
- ❑ 1 County Board of Supervisors
- ❑ 35 water and other special districts.

❑ Cases So Far:

- ❑ Palmdale, Santa Clara and Santa Monica went to trial on the merits. Palmdale and Santa Clara lost. Santa Monica is awaiting a decision.
- ❑ Modesto and Palmdale each spent about \$1.8 million on their defense (in addition to the attorney fee awards in those cases).
- ❑ Santa Monica has spent an estimated \$7 million so far. Plaintiffs in Santa Monica requested \$22 million in legal fees after the original trial.

❑ Key settlements:

- ❑ Palmdale: \$4.7 million
- ❑ Modesto: \$3 million
- ❑ Highland: \$1.3 million
- ❑ Anaheim: \$1.1 million
- ❑ Whittier: \$1 million
- ❑ Santa Barbara: \$600,000
- ❑ Tulare Hospital: \$500,000
- ❑ Camarillo: \$233,000
- ❑ Compton Unified: \$200,000
- ❑ Madera Unified: about \$170,000
- ❑ Hanford Joint Union Schools: \$118,000
- ❑ Merced City: \$42,000

❑ An estimated \$16 million in total settlements and court awards so far.

Districting Process

| Step | Description |
|--|---|
| Two Workshops August 31 & Sept. 22 | Share information about the process and opportunities for participation. |
| Two Initial Hearings Sept. 7 & Sept. 17 | Held prior to release of draft maps. Education and to solicit input on the composition of districts. |
| Census Data Release August 12, 2021 | Census Bureau releases official 2020 Census population data. |
| California Data Release Early October 2021 | California Statewide Database releases California's official 'prisoner-adjusted' 2020 redistricting data. |
| First Deadline for Draft Maps Sept. 29 by 5 p.m. | Deadline for public to Submit Maps for first publication (for consideration at the Oct. 9 hearing) |
| Release draft maps | Maps must be posted at least 7 days prior to hearing. |
| Third Hearing Oct. 9 | First of two hearings about the draft maps. Discuss and revise the draft maps and discuss the election sequence. |

Districting Process (continued)

| Step | Description |
|---|---|
| Second Deadline for Draft Maps Oct. 14 by 5 p.m. | Deadline for public to Submit Maps for second publication (for consideration at the Oct. 25 hearing) |
| Release draft maps | Maps must be posted at least 7 days prior to hearing. |
| Fourth Hearing/Possible Map Adoption Oct. 25 | Second of two hearings about the draft maps. Discuss and revise the draft maps and discuss the election sequence. If adopted, map must be approved via ordinance. Final map must be posted at least 7 days prior to adoption. |
| Fifth Hearing/Second Reading of Ordinance By November 1, 2021 (tent.) | Ordinances require two readings, once at introduction and a second at its adoption. Second reading/adoption is at least five days after introduction. |

Redistricting Rules and Goals

1. Federal Laws

Equal Population
Federal Voting Rights Act
No Racial Gerrymandering



2. California Criteria for Cities

1. **Geographically contiguous**
2. **Undivided neighborhoods and “communities of interest”**
(Socio-economic geographic areas that should be kept together)
3. **Easily identifiable boundaries**
4. **Compact**
(Do not bypass one group of people to get to a more distant group of people)

Prohibited:

“Shall not favor or discriminate against a political party.”

3. Other Traditional Redistricting Principles

Minimize voters shifted to different election years

Respect voters’ choices / continuity in office

Future population growth

Preserving the core of existing districts

Demographic Summary

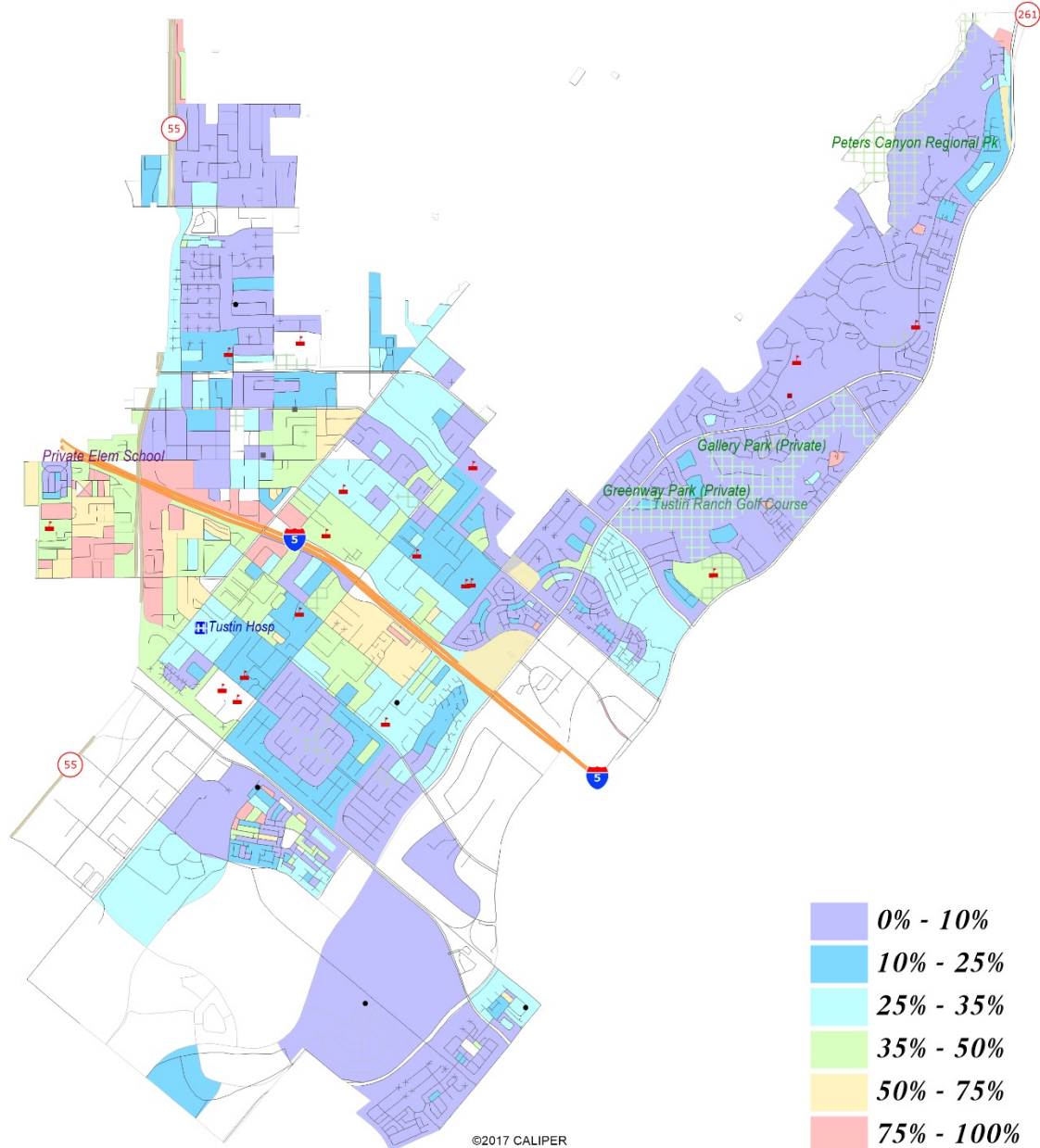
Estimates using
official 2020
demographic data
and **preliminary**
Census data

With four districts,
each district would
need to contain
about 20,069
residents

| City of Tustin - Census 2020 (preliminary data) | | | | | | | |
|---|-------------------|--------|-----|--|-----------------------------------|--------|-----|
| Category | Field | Count | Pct | Category | Field | Count | Pct |
| | 2020 Census Pop. | 80,276 | | | | | |
| Total Pop | Hisp | 32,712 | 41% | Age | age0-19 | 22,298 | 28% |
| | NH White | 22,901 | 29% | | age20-60 | 45,390 | 57% |
| | NH Black | 1,982 | 2% | | age60plus | 12,375 | 15% |
| | Asian-American | 20,685 | 26% | Immigration | immigrants | 27,234 | 34% |
| Citizen Voting Age Pop | Total | 48,431 | | | naturalized | 12,980 | 48% |
| | Hisp | 14,136 | 29% | Language spoken at home | english | 35,478 | 48% |
| | NH White | 20,757 | 43% | | spanish | 23,259 | 31% |
| | NH Black | 1,484 | 3% | | asian-lang | 11,096 | 15% |
| | Asian/Pac.Isl. | 11,731 | 24% | | other lang | 4,525 | 6% |
| Voter Registration (Nov 2020) | Total | 40,200 | | Language Fluency | Speaks Eng. "Less than Very Well" | 13,043 | 18% |
| | Latino est. | 11,363 | 28% | Education (among those age 25+) | hs-grad | 18,499 | 35% |
| | Spanish-Surnamed | 10,208 | 25% | | bachelor | 15,062 | 29% |
| | Asian-Surnamed | 6,699 | 17% | | graduatedegree | 7,973 | 15% |
| | Filipino-Surnamed | 770 | 2% | Child in Household | child-under18 | 9,862 | 38% |
| | NH White est. | 19,356 | 48% | Pct of Pop. Age 16+ | employed | 44,597 | 72% |
| | NH Black | 1,137 | 3% | Household Income | income 0-25k | 2,794 | 11% |
| Voter Turnout (Nov 2020) | Total | 34,220 | | | income 25-50k | 3,944 | 15% |
| | Latino est. | 8,923 | 26% | | income 50-75k | 4,459 | 17% |
| | Spanish-Surnamed | 8,016 | 23% | | income 75-200k | 10,893 | 42% |
| | Asian-Surnamed | 5,728 | 17% | | income 200k-plus | 3,711 | 14% |
| | Filipino-Surnamed | 634 | 2% | Housing Stats | single family | 14,439 | 51% |
| | NH White est. | 17,192 | 50% | | multi-family | 12,810 | 45% |
| | NH Black | 959 | 3% | | rented | 13,070 | 51% |
| Voter Turnout (Nov 2018) | Total | 23,087 | | | owned | 12,730 | 49% |
| | Latino est. | 5,271 | 23% | Total population data from the 2020 Decennial Census. Surname-based Voter Registration and Turnout data from the California Statewide Database. Latino voter reg. and turnout data are Spanish-surname counts adjusted using Census Population Department undercount estimates. NH White and NH Black reg. and turnout counts estimated by NDC. Citizen Voting Age Population, Age, Immigration, and other demographics from the 2015-2019 American Community Survey and Special Tabulation 5-year data. | | | |
| | Spanish-Surnamed | 4,735 | 21% | | | | |
| | Asian-Surnamed | 3,164 | 14% | | | | |
| | Filipino-Surnamed | 385 | 2% | | | | |
| | NH White est. | 13,264 | 57% | | | | |
| | NH Black est. | 891 | 4% | | | | |

Latino CVAP

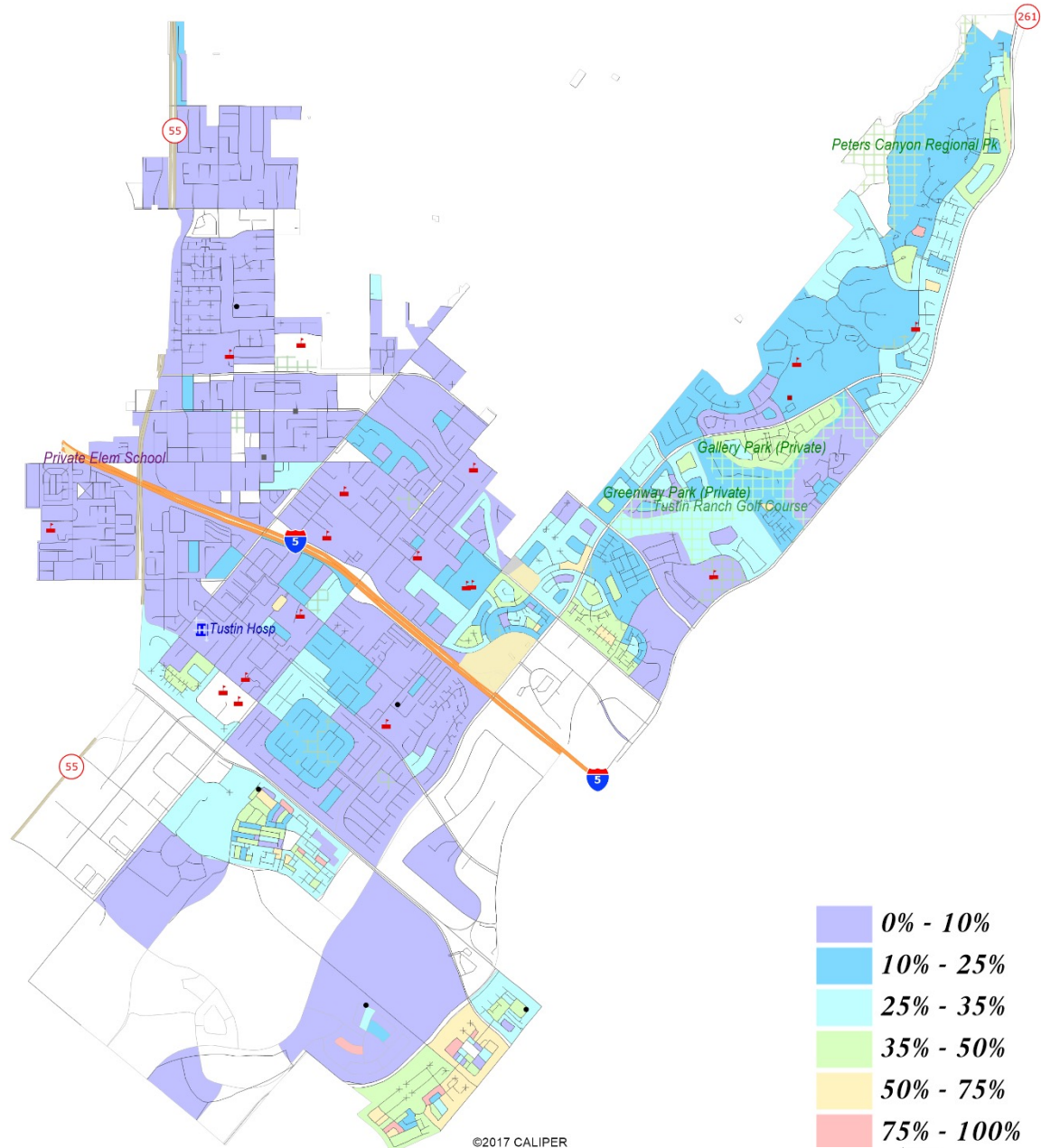
Latinos are concentrated in the western part of the city, particularly around I-5



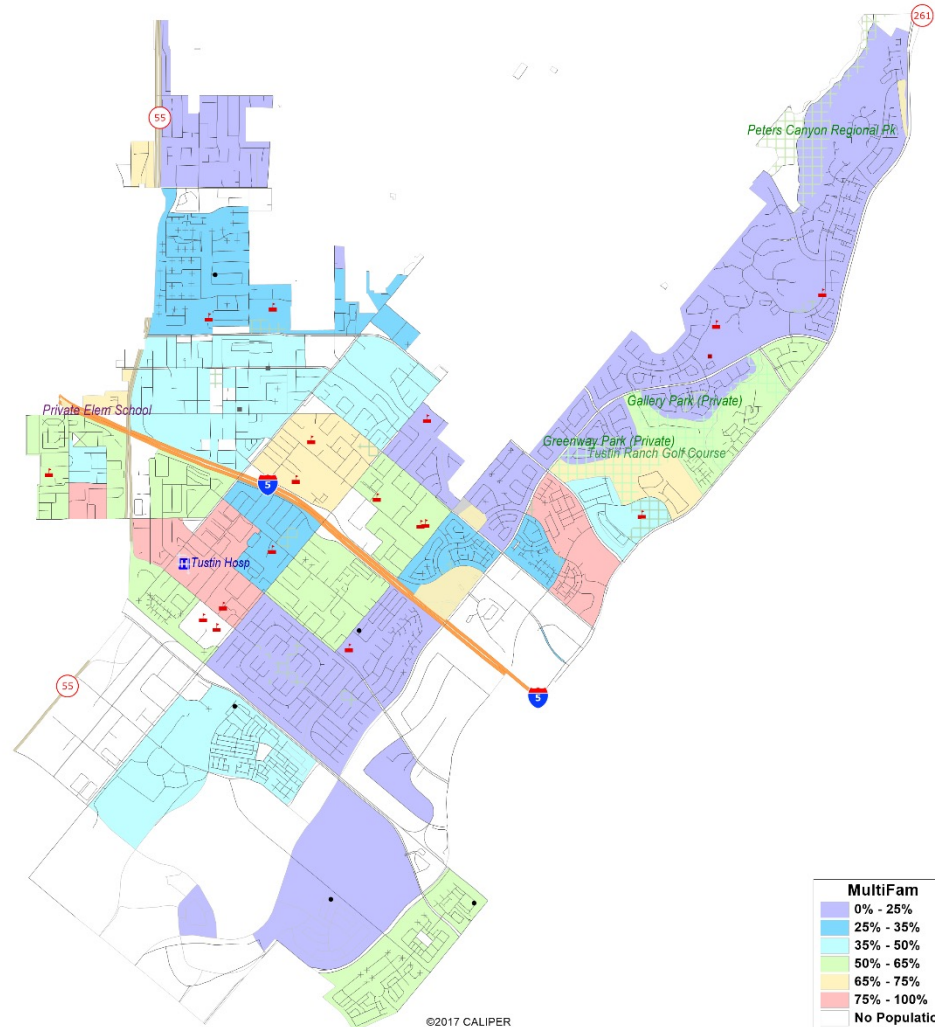
Asian-American CVAP

Asian-Americans are concentrated in the south and eastern parts of the city

There are no significant concentrations of Native American or Black/African-American population



Apartments / Multifamily Housing



Defining Neighborhoods

1st Question: What is your neighborhood?

2nd Question: What are its geographic boundaries?

Examples of physical features defining a neighborhood boundary:

- ❑ Natural neighborhood dividing lines, such as highway or major roads, rivers, canals and/or hills
- ❑ Areas around parks or schools
- ❑ Other neighborhood landmarks

In the absence of public testimony, planning records and other similar documents may provide definition.



Beyond Neighborhoods: Defining Communities of Interest

1st Question: What defines your community?

- ❑ Geographic Area, plus
- ❑ Shared issue or characteristic
 - ❑ Shared social or economic interest
 - ❑ Impacted by county policies
- ❑ Tell us “your community’s story”

2nd Question: Would this community benefit from being “included within a single district for purposes of its effective and fair representation”?

- ❑ Or would it benefit more from having multiple representatives?

Definitions of Communities of Interest may not include relationships with political parties, incumbents, or political candidates.

What do you consider
your communities of
interest?

Public Mapping and Map Review Tools

Draw a Map

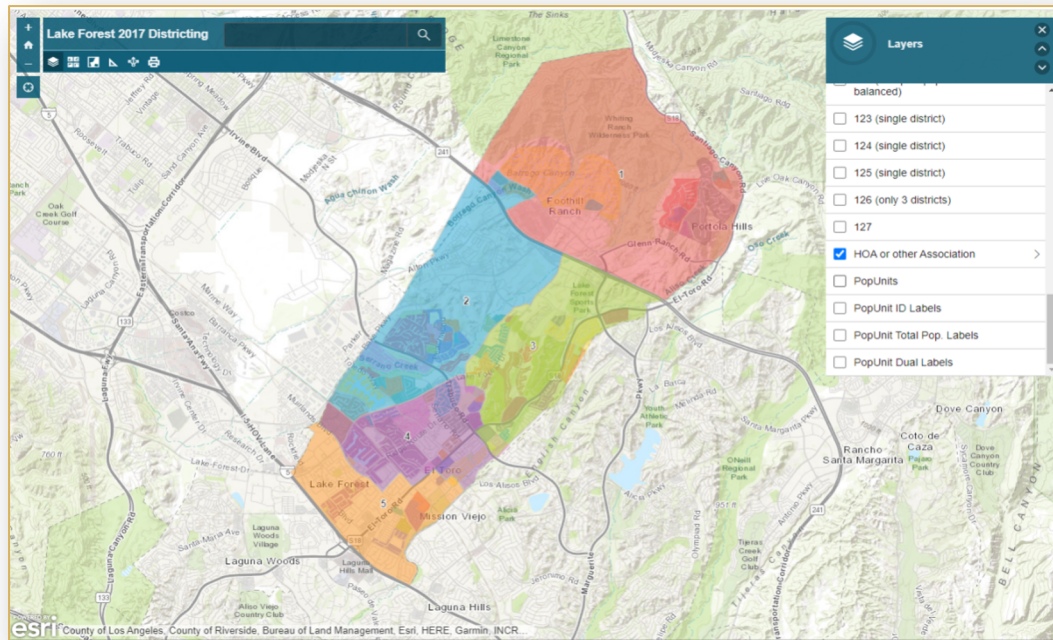
- **Different tools for different purposes**
 - Interactive Review Map, a simple map review tool
 - District Map Boundary Tool, “Draw Your Community Map”
 - Found on DrawTustin.org/draw-a-map/
 - Can be emailed to drawtustin@tustinca.org
 - Or can be dropped off in the City Clerk’s drop box at the front entrance of City Hall (300 Centennial Way, Tustin, CA 92780)

Whether you use the “Draw Your Community Map” or just draw on a napkin, we welcome your maps!

Simple Map Review Tool

Online Interactive Review Map

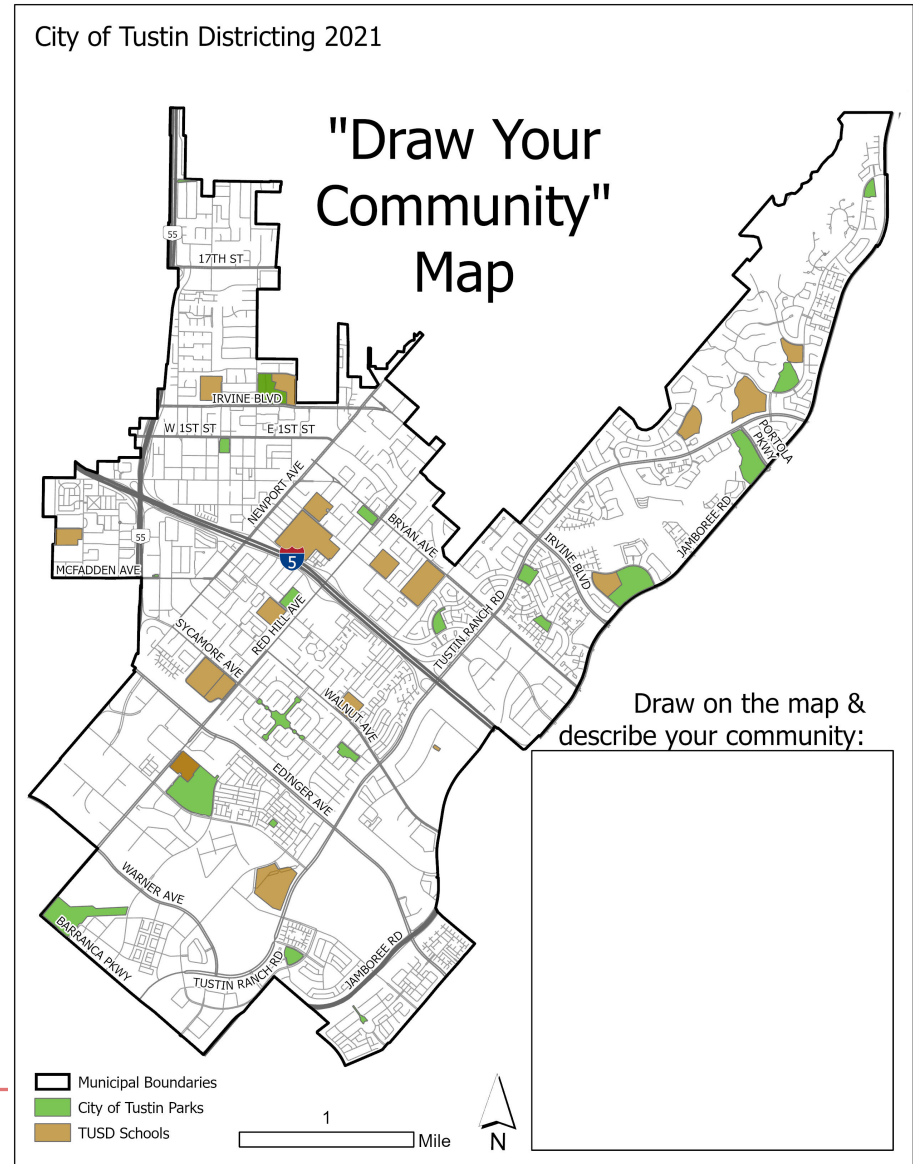
- ❑ ESRI's "ArcGIS Online" – similar to Google Maps in ease of use
- ❑ Used to review, analyze and compare maps, not to create them
- ❑ Includes overlays of “community of interest” and other data



Simple Map Drawing Tool

Paper “Public Participation Kit”

- ❑ For those without internet access or who prefer paper
- ❑ Shows streets and landmarks



Discussion & FAQ

What is your neighborhood and what are its boundaries?

What other notable areas are in the City, and what are their boundaries?

Any questions about the mapping tools?

Discussion to identify areas that meet each AB 849 definition:

- “neighborhoods”
- “communities of interest . . . that should be included within a single district for purposes of its effective and fair representation.”

Outreach

- ❑ Phone/Email Outreach
- ❑ Social Media
- ❑ Media Engagement
- ❑ Print Flyers/Signage
- ❑ Educational Workshops
- ❑ Dedicated Website (shown on next slide)

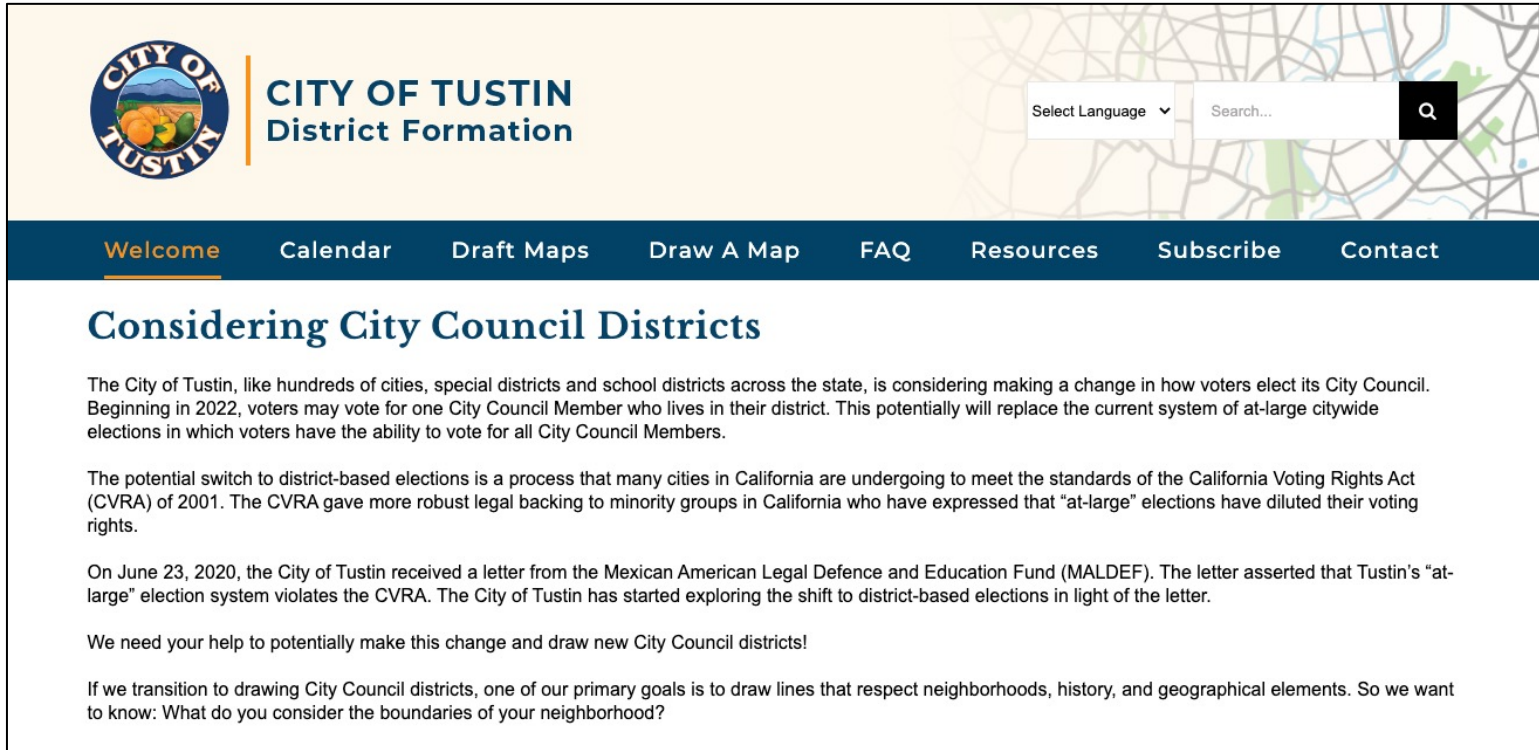
Multiple languages available for all outreach mechanisms

We invite you to share this information with your friends and neighbors to help inform the process!

Next Steps

| Step | Description |
|---|---|
| First Deadline for Draft Maps Sept. 29 by 5 p.m. | Deadline for public to Submit Maps for first publication (for consideration at the Oct. 9 hearing) |
| Release draft maps | Maps must be posted at least 7 days prior to hearing. |
| Third Hearing Oct. 9 | First of two hearings about the draft maps. Discuss and revise the draft maps and discuss the election sequence. |
| Second Deadline for Draft Maps Oct. 14 by 5 p.m. | Deadline for public to Submit Maps for second publication (for consideration at the Oct. 25 hearing) |
| Release draft maps | Maps must be posted at least 7 days prior to hearing. |
| Fourth Hearing/Possible Map Adoption Oct. 25 | Second of two hearings about the draft maps. Discuss and revise the draft maps and discuss the election sequence. If adopted, map must be approved via ordinance. Final map must be posted at least 7 days prior to adoption. |
| Fifth Hearing/Second Reading of Ordinance By November 1, 2021 (tent.) | Ordinances require two readings, once at introduction and a second at its adoption. Second reading/adoption is at least five days after introduction. |

Share Your Thoughts / Continue Engagement



CITY OF TUSTIN
District Formation

Select Language Search...

[Welcome](#) [Calendar](#) [Draft Maps](#) [Draw A Map](#) [FAQ](#) [Resources](#) [Subscribe](#) [Contact](#)

Considering City Council Districts

The City of Tustin, like hundreds of cities, special districts and school districts across the state, is considering making a change in how voters elect its City Council. Beginning in 2022, voters may vote for one City Council Member who lives in their district. This potentially will replace the current system of at-large citywide elections in which voters have the ability to vote for all City Council Members.

The potential switch to district-based elections is a process that many cities in California are undergoing to meet the standards of the California Voting Rights Act (CVRA) of 2001. The CVRA gave more robust legal backing to minority groups in California who have expressed that “at-large” elections have diluted their voting rights.

On June 23, 2020, the City of Tustin received a letter from the Mexican American Legal Defence and Education Fund (MALDEF). The letter asserted that Tustin’s “at-large” election system violates the CVRA. The City of Tustin has started exploring the shift to district-based elections in light of the letter.

We need your help to potentially make this change and draw new City Council districts!

If we transition to drawing City Council districts, one of our primary goals is to draw lines that respect neighborhoods, history, and geographical elements. So we want to know: What do you consider the boundaries of your neighborhood?

Come to the next Public Hearing: **October 9, 2021**

Click “Subscribe” on DrawTustin.org to sign up for updates

Email: drawtustin@tustinca.org